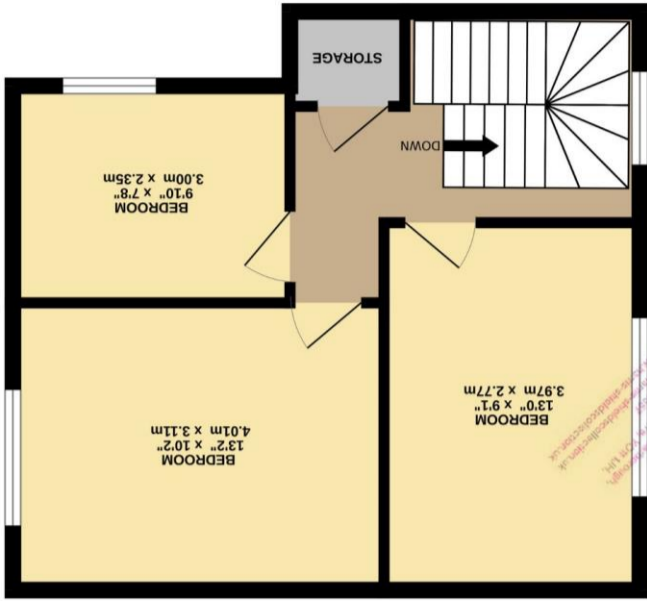


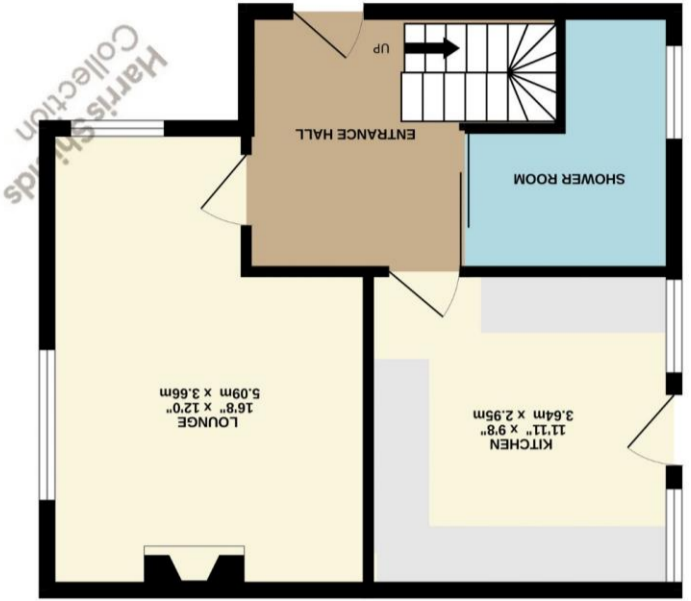


Whilst every attempt has been made to ensure the accuracy of the floorplan contained here, measurements of doors, windows, rooms and any other items are approximate and no responsibility is taken for any error, omission or mis-statement. This plan is for illustrative purposes only and should be used as such by any prospective purchaser. The services, systems and appliances shown have not been tested and no guarantee as to their operability or efficiency can be given.
 Made with Metropix ©2024

TOTAL FLOOR AREA: 853 sq.ft. (79.2 sq.m.) approx.



1ST FLOOR
430 sq.ft. (40.0 sq.m.) approx.



GROUND FLOOR
423 sq.ft. (39.3 sq.m.) approx.

25 Year Guarantee
 10 Year Guarantee
 5 Year Guarantee
 3 Year Guarantee
 1 Year Guarantee
 Opening doors
 for over 60 years



79 Colescliffe Road, Scarborough, YO12 6SB

Harris Shields
Collection

Harris Shields Collection

Harris Shields Collection, 25 Northway, Scarborough
North Yorkshire, YO11 1JH

01723 341557

mail@harris-shieldscollection.uk

<https://harris-shieldscollection.uk/>

- ✓ Three Bedrooms
- ✓ Off Street Parking
- ✓ No Onward Chain
- ✓ EPC Rating D
- ✓ Council Tax Band A

Guide Price £130,000

Description

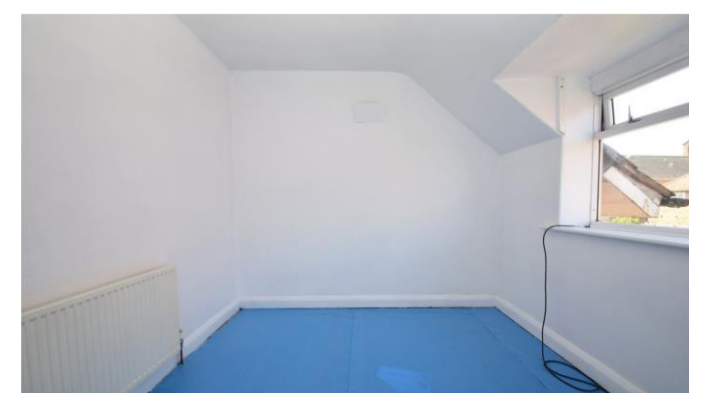
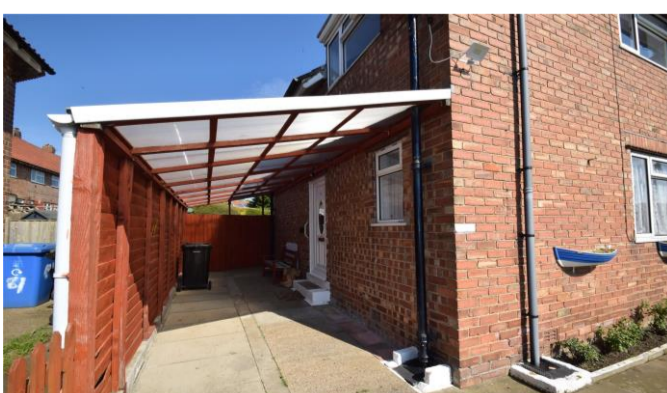
Colescliffe Road places you at the heart of this sought-after community. With a little bit of TLC this, ex local authority home can be enhanced to create a truly enchanting property. This residence provides a solid foundation for future enhancements. Modernise the kitchen, refresh the bathroom, or simply add your personal touch to make it truly your own. The outdoor areas offer ample space providing a canvas for your imagination to flourish. The property comes with gas central heating and double glazing throughout. Offered to the market with NO ONWARD CHAIN. Council Tax band A.

Viewings are to be arranged with Harris Shields Collection.



Additional Information

Council tax band A



Opening doors
for over 60 years

Harris Shields
Collection